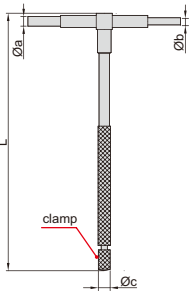


TELESCOPING GAGE SET

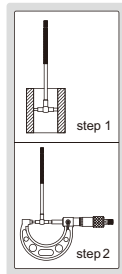


4206-1

(mm)				
Range	L	Øa	Øb	Øc
8-12.7mm	115	3.9	2.9	6.2
12.7-19mm	115	5.3	3.8	6.2
19-32mm	115	5.3	3.8	6.2
32-54mm	137	7.6	6.1	7.2
54-90mm	137	7.6	6.1	7.2
90-150mm	137	7.6	6.1	7.2

- 6 gages per set
- For quick measurement of inside diameter of holes and width of slots
- Satin chrome finish

Code	Total range	Gages included
4206-1	8-150mm	8-12.7mm, 12.7-19mm, 19-32mm, 32-54mm, 54-90mm, 90-150mm



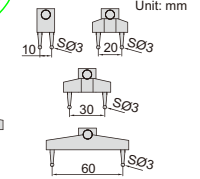
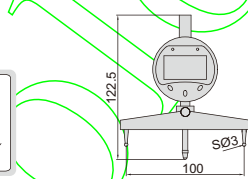
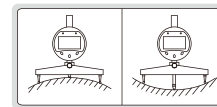
DIGITAL RADIUS GAGE

ATTENTION: NO DATA OUTPUT



2183

- Measure radius of internal and external arcs
- Supplied with 5 jaws for different sizes of arc
- Battery CR2032



Code	Range of radius (R)	Resolution	Accuracy (mm)
2183	5-700mm/0.2-27.5"	0.005mm/0.00005"	±0.01R*

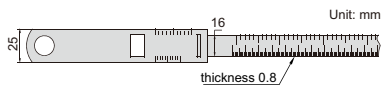
*R is the radius to be measured

CIRCUMFERENCE TAPE

ATTENTION: BASIC MODEL



7114-950

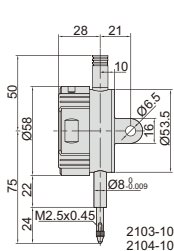


- Graduation: 0.1mm
- Measure diameter and circumference of pipes, trees, tires, etc.
- Laser engraved scale
- Made of stainless steel

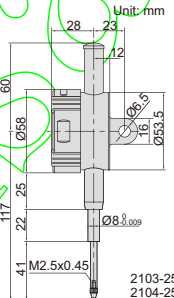
Code	Circumference range	Diameter range	Accuracy	
			Circumference	Diameter
7114-950	60-950mm	Ø20-300mm	±1.5mm	±0.5mm
7114-2200	940-2200mm	Ø300-700mm	±1.5mm	±0.5mm
7114-3460	2190-3460mm	Ø700-1100mm	±1.5mm	±0.5mm

DIGITAL INDICATOR (ADVANCED MODEL)

DATA OUTPUT



2103-10

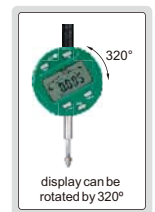
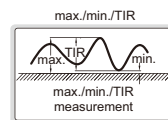


2103-25



2104-25

- Reading in digit and analog
- Display can be rotated by 320°
- Button function: tolerance Go and No-Go display, data preset, measuring direction change, max./min./TIR measurement, inch/metric conversion, absolute/incremental measurement
- CR2032 battery, automatic power off
- Data output
- Optional accessory: data output cable, backs, contact points



Resolution 0.001mm/0.00005"

Code	Range	Accuracy	Hysteresis	Remark
2103-10*	12.7mm/0.5"	5µm	2µm	lug back
2103-25*	25.4mm/1"	5µm	3µm	lug back
2103-10F*	12.7mm/0.5"	5µm	2µm	flat back
2103-25F*	25.4mm/1"	5µm	3µm	flat back

*Supplied with manufacturer inspection certificate traceable to NIST USA



Resolution 0.01mm/0.0005"

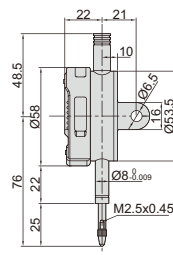
Code	Range	Accuracy	Hysteresis	Remark
2104-10*	12.7mm/0.5"	20µm	10µm	lug back
2104-25*	25.4mm/1"	20µm	10µm	lug back
2104-10F*	12.7mm/0.5"	20µm	10µm	flat back
2104-25F*	25.4mm/1"	20µm	10µm	flat back

DIGITAL INDICATOR (STANDARD MODEL)



DATA OUTPUT

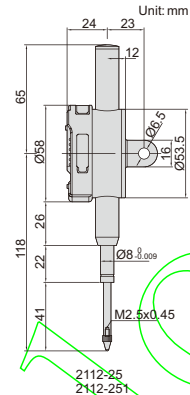
spindle lift knob is included



2112-10
2112-101



2112-10



2112-25
2112-251



2112-251

- Button function: on/off, inch/mm, zero
- CR2032 battery, automatic power off
- Data output
- Optional accessory: data output cable, backs, contact points

Resolution 0.001mm/0.00005"

Code	Range	Accuracy	Hysteresis	Remark
2112-101*	12.7mm/0.5"	5µm	2µm	lug back
2112-251*	25.4mm/1"	5µm	3µm	lug back
2112-101F*	12.7mm/0.5"	5µm	2µm	flat back
2112-251F*	25.4mm/1"	5µm	3µm	flat back

*Supplied with manufacturer inspection certificate traceable to NIST USA

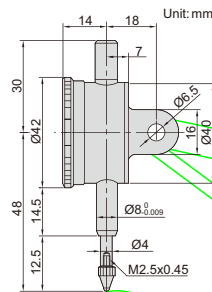
Resolution 0.01mm/0.0005"

Code	Range	Accuracy	Hysteresis	Remark
2112-10*	12.7mm/0.5"	20µm	10µm	lug back
2112-25*	25.4mm/1"	20µm	10µm	lug back
2112-10F*	12.7mm/0.5"	20µm	10µm	flat back
2112-25F*	25.4mm/1"	20µm	10µm	flat back

COMPACT DIAL INDICATOR



2311-5



- Graduation: 0.01mm
- Meet DIN878
- Jeweled bearing
- With lug back
- Supplied with limit pointers
- Optional accessory: backs, contact points

JEWELLED BEARING



Code	Range	Accuracy	Hysteresis	Range/rev	Dial reading
2311-5*	5mm	16µm	3µm	0.5mm	0-50

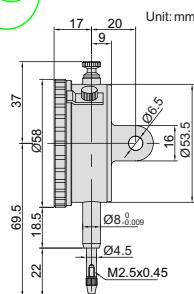
*Supplied with manufacturer inspection certificate traceable to NIST USA

DIAL INDICATOR



2301-10

ATTENTION: PROMOTION MODEL



- Graduation: 0.01mm
- Dial reading: 0-100
- Meet DIN878
- Jeweled bearing
- Supplied with limit hands and bezel clamp
- Packed in carton box
- Optional accessory: backs, contact points



Code	Range	Accuracy	Hysteresis	Range/rev	Remark
2301-10*	10mm	17µm	3µm	1mm	lug back with spare flat back
2301-10F*	10mm	17µm	3µm	1mm	flat back

*Supplied with manufacturer inspection certificate traceable to NIST USA

DIAL INDICATOR

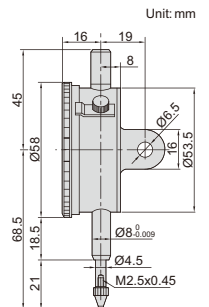


2308-10A

JEWELLED BEARING



- Graduation: 0.01mm
- Dial reading: 0-100
- Meet DIN878
- Jeweled bearing
- Supplied with limit pointers and bezel clamp
- Optional accessory: backs, contact points



Code	Range	Accuracy	Hysteresis	Range/rev	Remark
2308-10A*	10mm	17µm	3µm	1mm	lug back
2308-10FA*	10mm	17µm	3µm	1mm	flat back

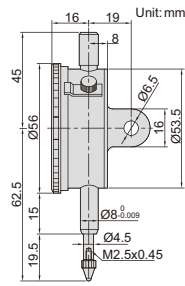
*Supplied with manufacturer inspection certificate traceable to NIST USA

PRECISION DIAL INDICATOR



2313-1A

JEWELLED BEARING



- Graduation: 0.001mm
- Jeweled bearing
- Supplied with limit pointers and bezel clamp
- Optional accessory: backs, contact points

Code	Range	Accuracy	Hysteresis	Range/rev	Dial reading	Remark
2313-1A*	1mm	5µm	2µm	0.2mm	0-100-0	lug back
2313-1FA*	1mm	5µm	2µm	0.2mm	0-100-0	flatback

*Supplied with manufacturer inspection certificate traceable to NIST USA

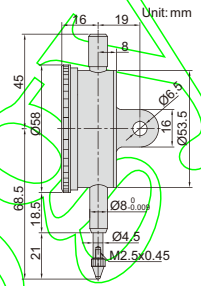
SHOCKPROOF DIAL INDICATOR



2314-10A

JEWELLED BEARING

SHOCK PROOF



- Graduation: 0.01mm
- Shockproof
- Jeweled bearing
- Supplied with limit pointers and bezel clamp
- Optional accessory: backs, contact points

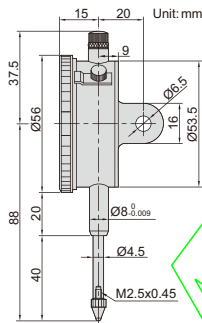
Code	Range	Accuracy	Hysteresis	Range/rev	Dial reading	Remark
2314-10A*	10mm	20µm	3µm	1mm	0-100	lug back
2314-10FA*	10mm	20µm	3µm	1mm	0-100	flatback

*Supplied with manufacturer inspection certificate traceable to NIST USA

DIAL INDICATOR



2310-30A



- Graduation: 0.01mm
- Dial reading: 0-100
- Supplied with limit pointers and bezel clamp
- Optional accessory: backs, contact points

Code	Range	Accuracy	Hysteresis	Range/rev	Remark
2310-30A*	30mm	35µm	7µm	1mm	lug back
2310-30FA*	30mm	35µm	7µm	1mm	flatback

*Supplied with manufacturer inspection certificate traceable to NIST USA

DIAL INDICATOR

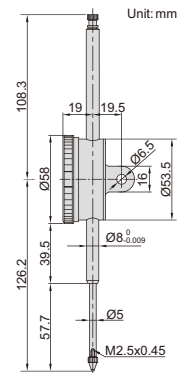


2309-50



JEWELLED BEARING

SHOCK PROOF



- Graduation: 0.01mm
- Range/rev: 1mm
- Dial reading: 0-100
- Shockproof
- Jeweled bearing
- Flat back with spare lug back
- Supplied with limit pointers
- Optional accessory: backs, contact points

Code	Range	Accuracy	Hysteresis
2309-50*	50mm	40µm	8µm

*Supplied with manufacturer inspection certificate traceable to NIST USA

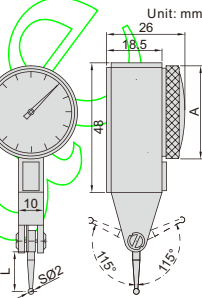
DIAL TEST INDICATOR



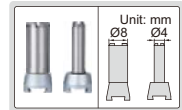
2380-08



JEWELLED BEARING



clamps (included)



- Jeweled bearing
- Carbide contact point
- Two measuring directions
- Anti magnetic body
- Supplied with two clamps: diameter Ø4mm and Ø8mm
- Optional accessory: styli

Graduation: 0.01mm (mm)

Code	Range	Accuracy	Hysteresis	Dial reading	A	L
2380-08*	0.8mm	13µm	3µm	0-40-0	Ø30	13.5
2381-08*	0.8mm	13µm	3µm	0-40-0	Ø37	13.5

Graduation: 0.002mm (mm)

Code	Range	Accuracy	Hysteresis	Dial reading	A	L
2380-02*	0.2mm	6µm	2µm	0-100-0	Ø30	12.5
2381-02*	0.2mm	6µm	2µm	0-100-0	Ø37	12.5

*Supplied with manufacturer inspection certificate traceable to NIST USA

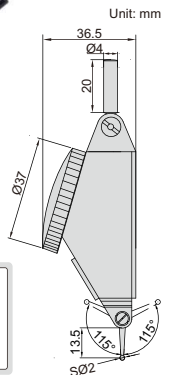
LARGE RANGE DIAL TEST INDICATOR



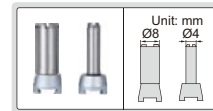
2386-16A



JEWELLED BEARING



clamps (included)



- Graduation: 0.01mm
- Jeweled bearing
- Carbide contact point
- Two measuring directions
- Anti magnetic body
- Supplied with two clamps: diameter Ø4mm and Ø8mm
- Optional accessory: styli

Code	Range	Accuracy	Hysteresis	Dial reading
2386-16A*	1.6mm	25µm	8µm	0-40-0

*Supplied with manufacturer inspection certificate traceable to NIST USA

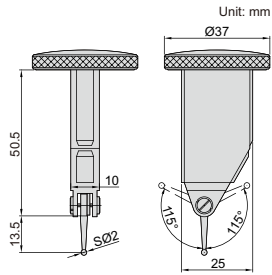
BACK PLUNGER TYPE DIAL TEST INDICATOR



JEWELLED BEARING

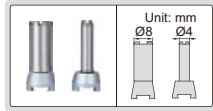


2398-08



- Graduation: 0.01mm
- Jeweled bearing
- Carbide contact point
- Two measuring directions
- Anti magnetic body
- Supplied with two clamps: diameter Ø4mm and Ø8mm
- Optional accessory: styli

clamps (included)



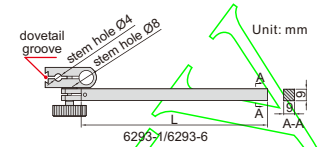
Code	Range	Accuracy	Hysteresis	Dial reading
2398-08*	0.8mm	13µm	3µm	0-40-0

*Supplied with manufacturer inspection certificate traceable to NIST USA

DIAL TEST INDICATOR HOLDER



6293-1



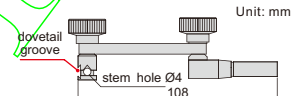
Code	Stem section	Stem length (L)
6293-1	9x9mm	100mm
6293-6	9x9mm	50mm



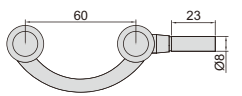
DIAL TEST INDICATOR CENTERING HOLDER



6291-1



Code
6291-1

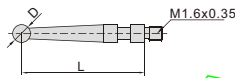


- Center cylinders or holes on machine tools

STYLI FOR DIAL TEST INDICATORS



6284-3



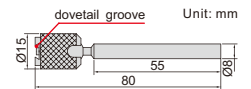
(mm)

Code	For dial test indicator	Material of contact point	L	D
6284-1	2380-08, 2398-08	steel	13.5	SØ1
6284-3	2381-08, 2399-08, 2386-16A	carbide	13.5	SØ2

DIAL TEST INDICATOR UNIVERSAL HOLDER



6297-1



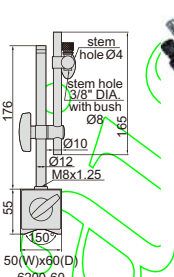
Code
6297-1

- Set the indicators at the desired attitude to the workpiece

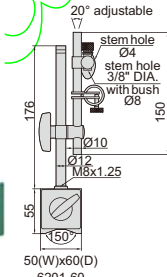
MAGNETIC STAND



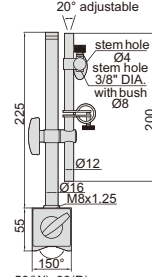
6200-60



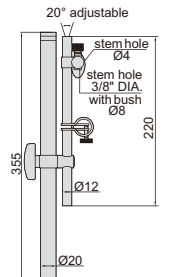
6201-60



6202-80



6202-100



- For digital/dial indicators and dial test indicators

Code	Magnetic force	Applicable holding stem	Remark
6200-60	60kgf	Ø8mm, Ø4mm, 3/8" DIA.	without fine adjustment
6201-60	60kgf	Ø8mm, Ø4mm, 3/8" DIA.	with fine adjustment
6202-80	80kgf	Ø8mm, Ø4mm, 3/8" DIA.	with fine adjustment
6202-100	100kgf	Ø8mm, Ø4mm, 3/8" DIA.	with fine adjustment